

A New Way To Work - Visualize Your Mind!

MindVisualizer Standard Edition is a visual information management software that utilizes **Mind Mapping**© and **Concept Mapping** methodologies, offering an innovative approach for:

- **Brainstorming** and Ideation
- **Decision Making** and Solve Complex Problems
- **Note Taking** and Creative Writing
- **Mind Mapping** and Business Process Mapping
- **Knowledge/Document Management**
- **To Do lists** and **Project Planning/Management**
- ...Usages are only limited by your imagination!

Think Visually and Work Smarter!

MindVisualizer's visual mapping approach lets you work the way you think, as a result you can **get better results** as being able to:

- ✓ **See the big picture** of the information
- ✓ **See relationships** between complex issues
- ✓ Keep **focus on key parts** of the problems

MindVisualizer Feature Highlights

✓ Absolutely Easy to Use

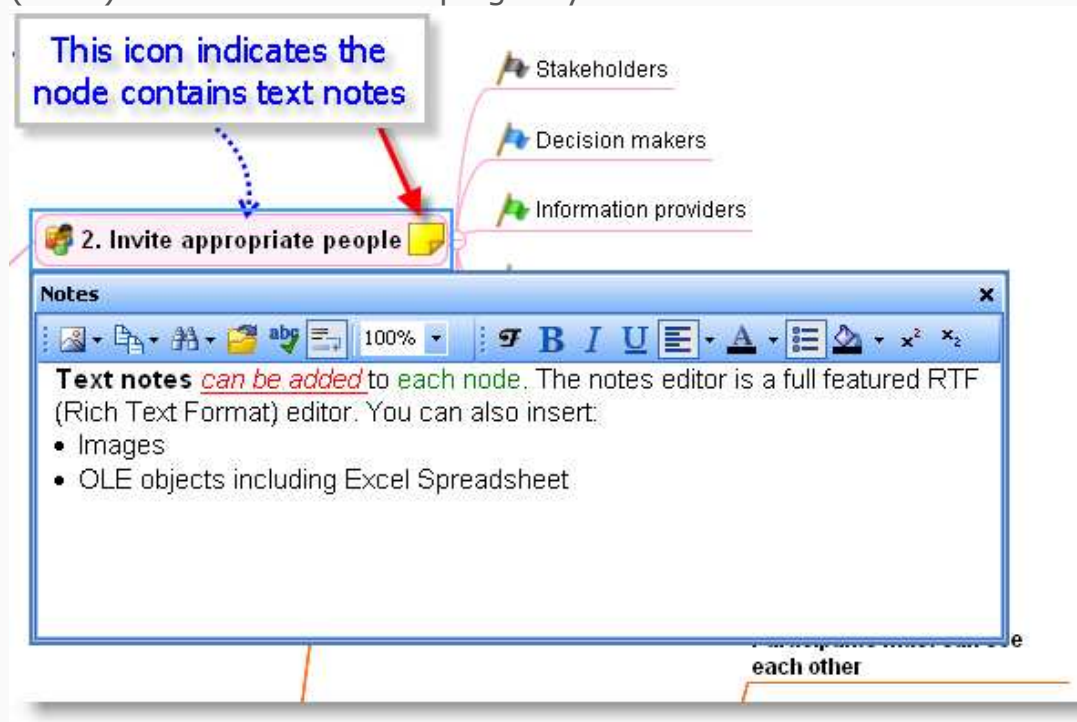


We believe that a really easy to use **User Interface is self-explanatory**. MindVisualizer's UI is well-designed following the **K.I.S.S (Keep It Simple, Stupid)** principle, so it is **intuitive enough** to allow you find out how to **do what you want easily**. Moreover, MindVisualizer is shipped with **Tutorial Videos** to get you started quickly. Your learning curve will be smooth.

✓Extended Map Node Properties

The visual maps in MindVisualiser are **not only mindmaps** or concept maps or spider maps, the nodes/branches have been extremely **extended for visual information management**.

Text Notes: The WYSIWYG (What You See Is What You Get) **text notes editor** allows you insert rich format text and OLE objects including **MS Excel Spreadsheet** into the map nodes. Text notes can be used to store detailed information for a topic (node) while the visual maps give you brief views.



Icons: The **Icon Library** allows you mark the mind map branches with professional designed icons, making the maps **real visual** and pleasing to read, result in better looking presentations. You can also **add your own icons** from hard disk or from the Internet into the Icon Library to enrich it.

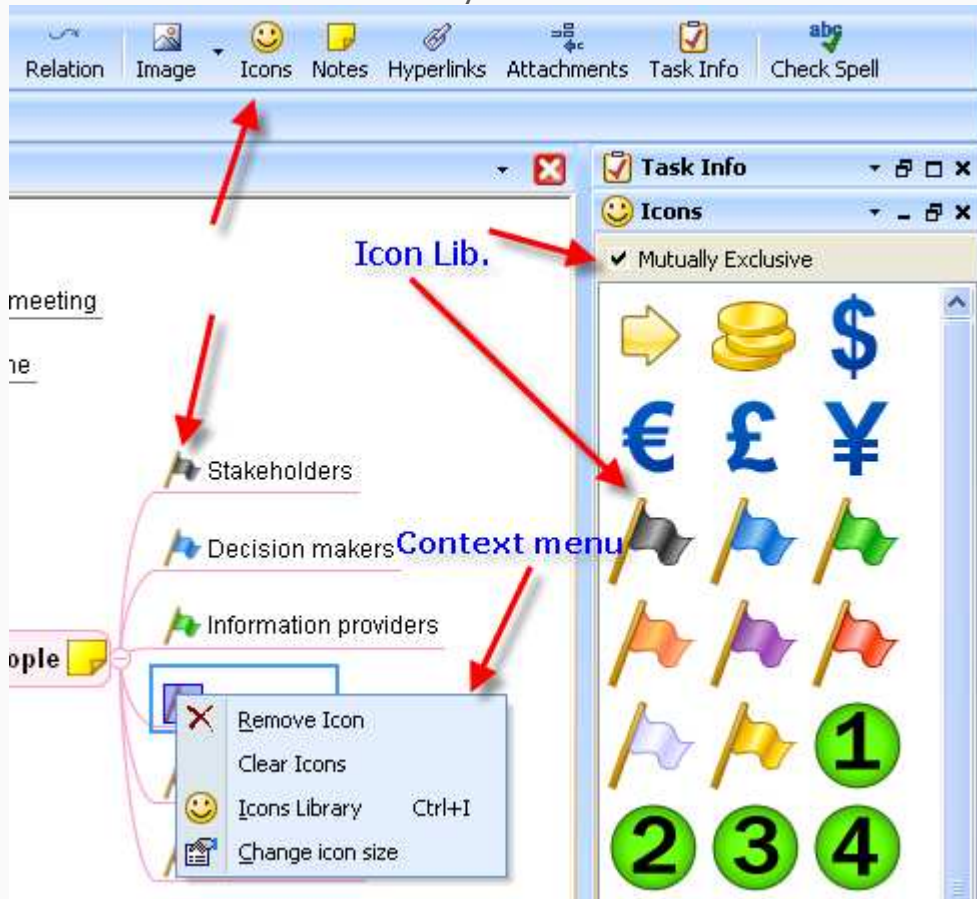
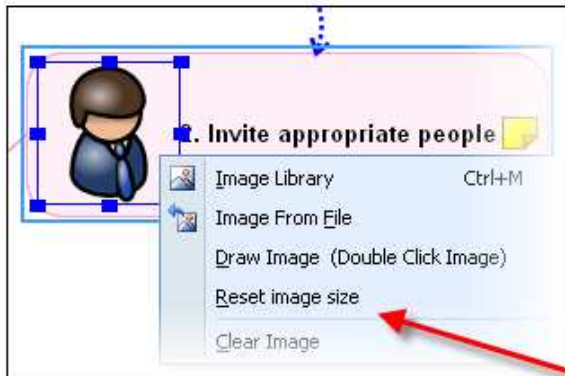


Image: Images are another kind of visual elements for the mind maps, you can choose images from the large **Image Library** or from the hard disks. You can even **draw picture in-place** with Microsoft Paint®, the tight integration with MS Paint® program enables you starting editing the pictures by just a double click, saving you a lot of time!



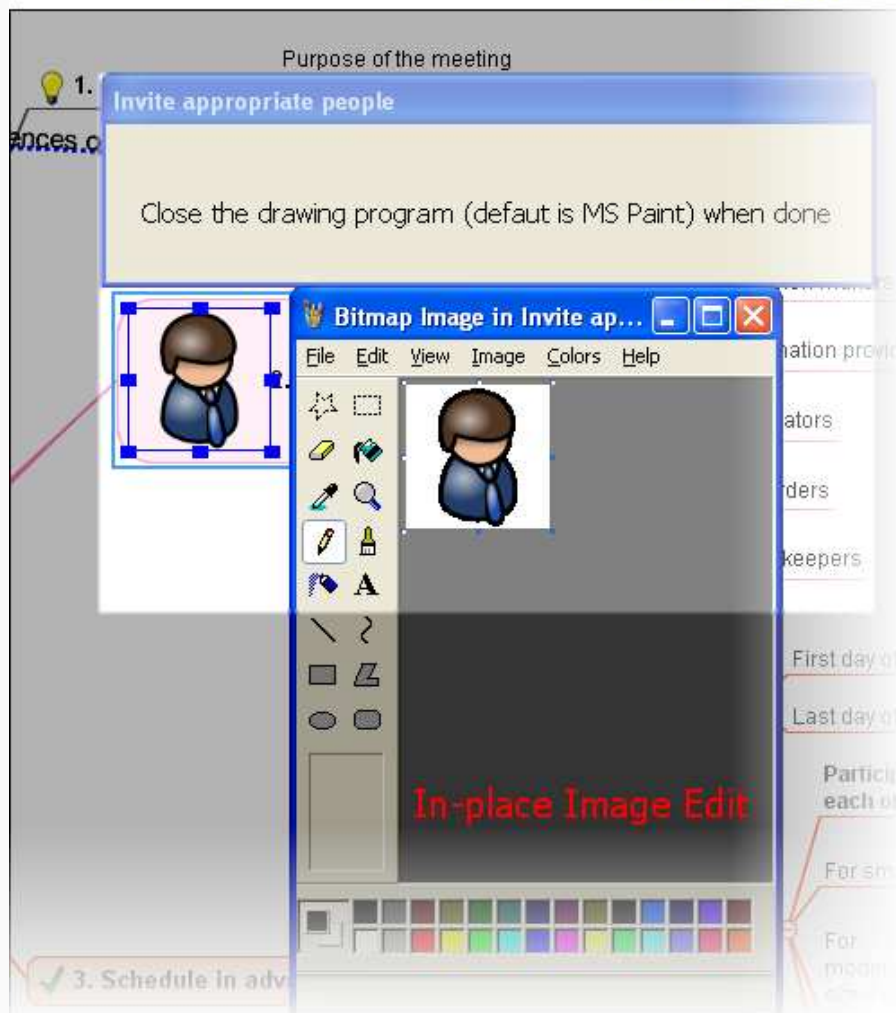
Search image by keyword

Image Lib.

Context menu

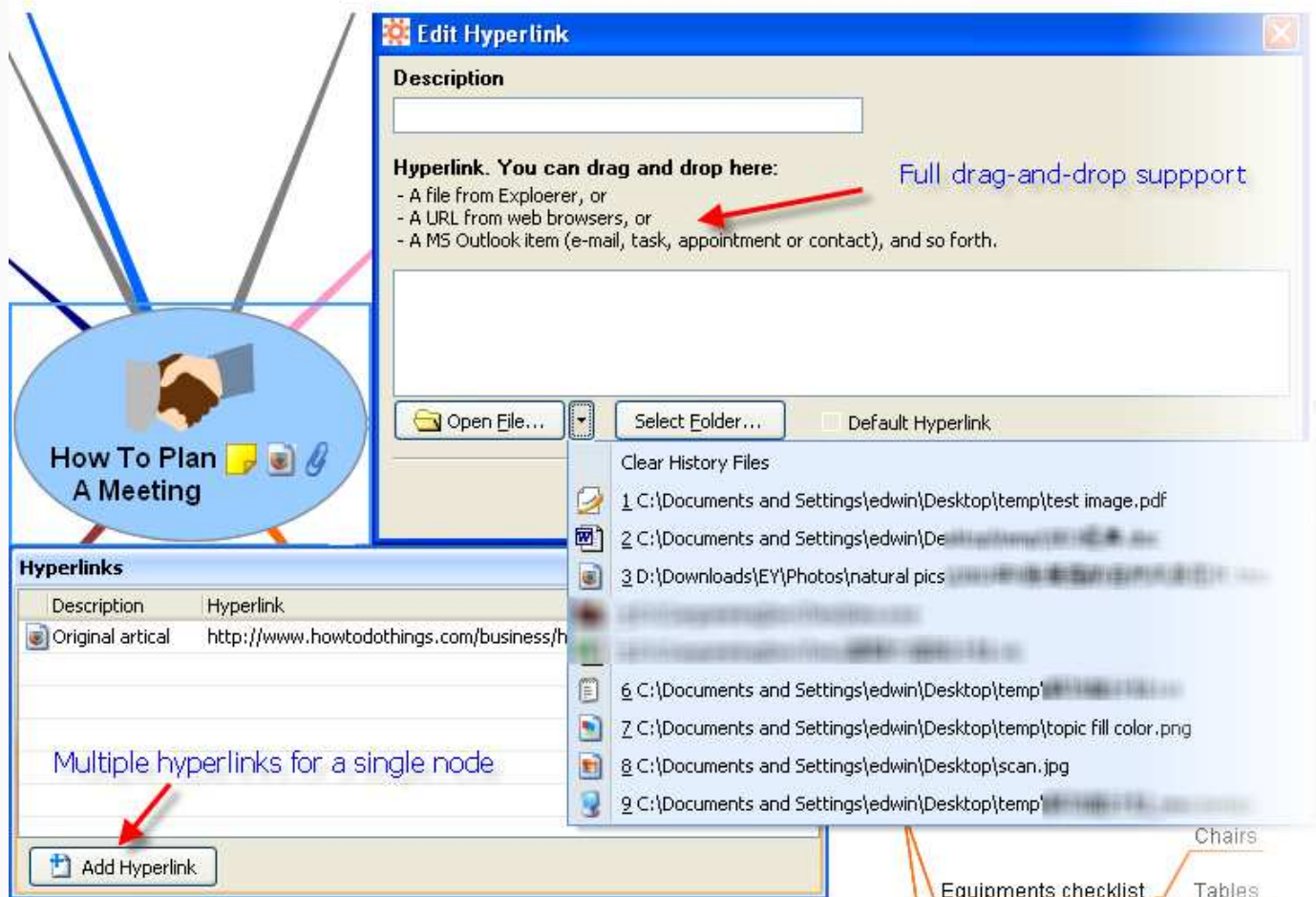
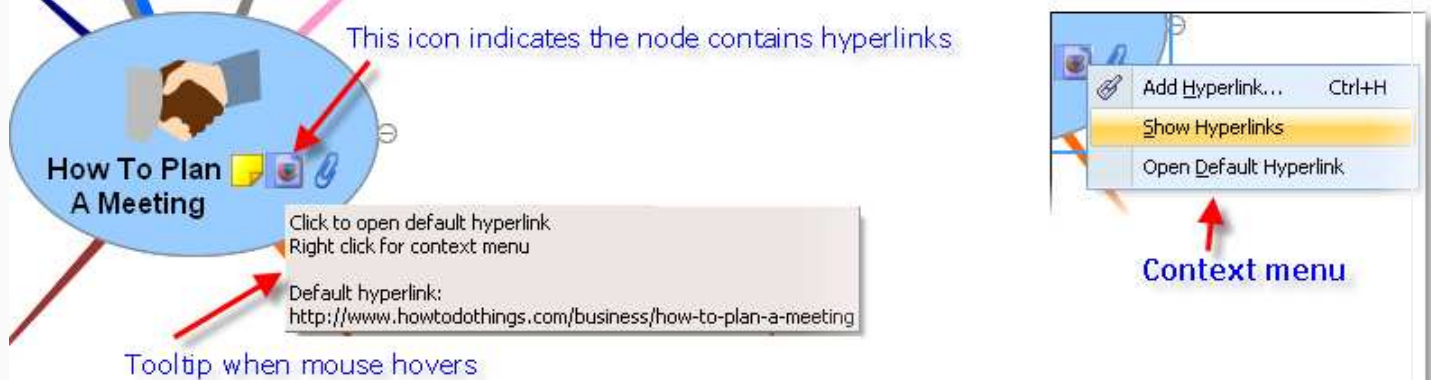


Image Lib. popup menu

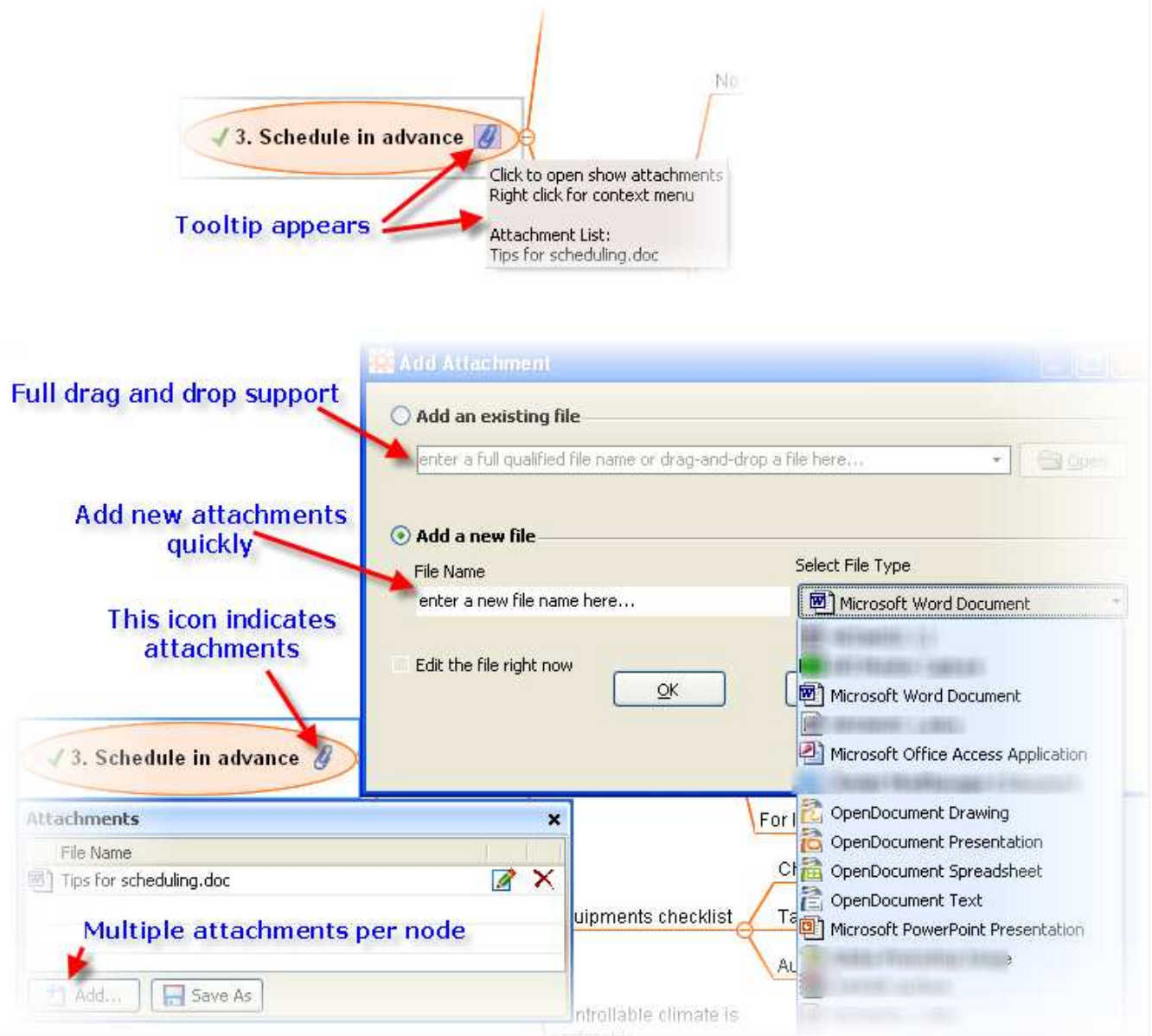


In-place Image Edit

Hyperlinks: You can **link the nodes** to website URL's, email addresses, disk files, **office documents**, or even Office **Outlook items** (emails, tasks, appointments, calendars, folders), and all other kinds of hyperlinks. Opening the links in the maps is as easy as a mouse click.

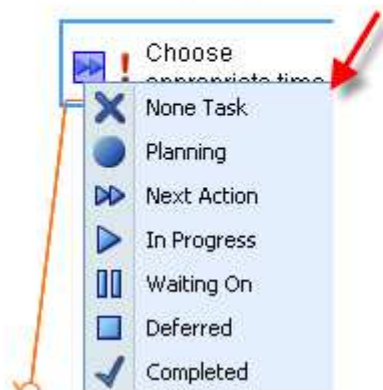


Attachments: Node **attachments** are another method for **document management** similar to hyperlinks while they are slightly different, other than pointing to external stuff, attachments are **embedded** into the map files, all your information is **stored in a single place**. Opening and editing of the attachments is painless, click to edit and close the associated program will save it back to the map!

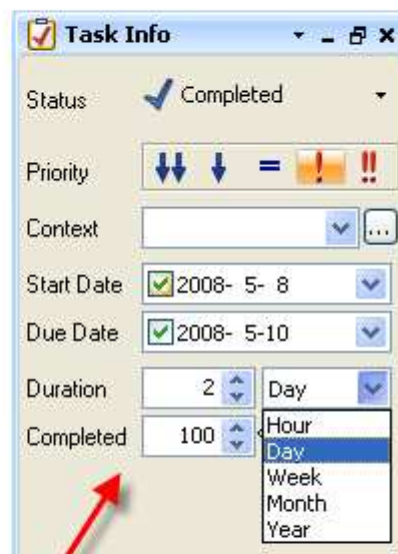
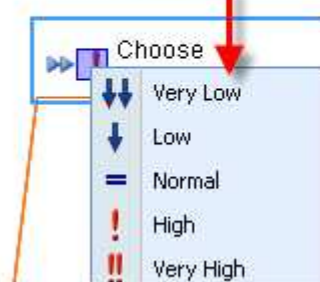


Task Information: Visual mapping is good for **to do lists** by nature as you can see all your tasks **at a glance**, very **concise and clear**. MindVisualizer goes further by allowing you specify **task-specific information** for nodes. You can specify the task status, task priority, start day, due date, duration, completed percentage, GTD context, etc. Check out the screenshots.

Popup menu for setting task status



Popup menu for setting task priority











Detailed task info can be set via the sidebar

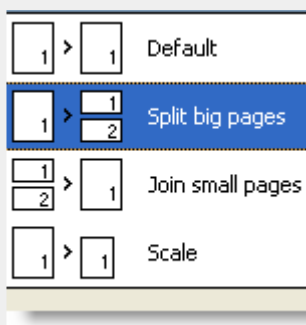
✓ Export Maps and Office Integration

Visual mapping is a great methodology as it works in the way our brain works, but sometimes converting the maps into other documents will help in **sharing your work** with others. Following is a list of export formats supported by Mind Visualizer. Office document export support Microsoft Office 2000/XP/2003/2007. Adobe Acrobat PDF File (*.pdf)

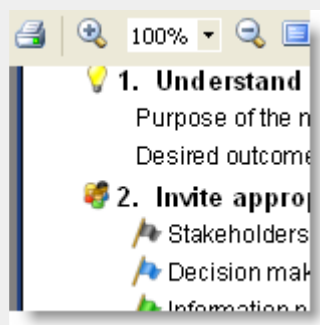
- Microsoft Office Word Document (*.doc)
- Microsoft Office PowerPoint Slide (*.ppt)
- Microsoft Office Excel Spreadsheet (*.xls)
- HTML Web page in outlined style (*.html or *.htm)

-  RTF Document (Rich Text Format Document) (*.rtf)
-  OpenOffice.org Open Document Text (*.odt)
-  OpenOffice.org Open Spreadsheet (*.ods)
-  Plain Text in outlined style (*.txt)
-  JPEG/JPG Image (*.jpeg or *.jpg)
-  GIF Picture (*.gif)
-  PNG Image (*.png)
-  BMP Photo (*.bmp)

✓ Powerful Printing

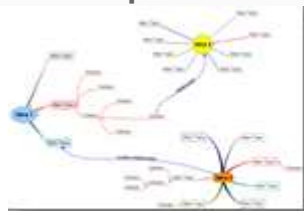


Print the maps "as it". Scale and **split printing** are supported



Print outlined list. MindVisualizer is the only visual mapping software that supports this option!

✓ Multiple Central Topics in a Map and Flexible Node Positioning



With MindVisualizer you can have multiple central topics in a single mind map, this is achieved by adding floating topics to the visual map in addition to the default central topic. This allows you visualize slightly independent ideas in a single map. Moreover, unlike other similar software, MindVisualizer allows you **place the branches freely** without restrictions. Check out the screenshot.

✓ Concept Mapping with Floating Topics



With the powerful floating topics, floating text and floating images support, you can easily make concept maps with MindVisualizer. **Concept mapping** is also known as **Spider Mapping**, which is widely used in the world, it is another excellent and usefully visual thinking tool for people.

✓ Microsoft Office Outlook Integration

MindVisualizer allows you drag and drop any kind of Outlook items, including **emails, tasks, contacts, calendars, folders** and so on, into your maps and it will automatically create hyperlinks to the items. Note the 'MSN notification' style hints on the lower-right corner for advanced options before dropping the items. **Outlook will open** when you **click the linked items**.

✓ Supper Drag and Drop Support

You can easily organize and restructure your mind maps with drag and drop operations, it's **quick and intuitive**.

Drag from external:

Besides you can drag and drop outlook emails into your maps to create hyperlinks, you can also **drag and drop files** from hard disk and **URL's** from web browsers like **IE** and **Firefox**, to create hyperlinks. You can also drag-and-drop **text** from any other programs.

✓ Exchange Information with External Programs

Copy **from external programs**:

Smart indented text recognition: MindVisualizer can intelligently recognize the text you are pasting, one line equals one node, indented line will be treated as child nodes. This allows you copy contents from other mind mapping software. Copy image: You can directly copy images from other image processing or drawing programs and paste it into your mind maps.

Copy nodes **to external programs**:

Copy as image: The selected nodes in your mind map can be copied as image, in turn, you can paste the image into Word, Excel, PowerPoint, etc.

Copy as indented text: When you copy the selected nodes in your mind map, they will be also available in clipboard as indented text.

✓ Handy Map View and Map Navigation

Fold/Unfold branches: When your map contains lots of information it will become hard to keep focus on the high level view, in this case you can hide some details by folding the branches; When it comes to show the details, you expand the branches.

Drag with right button to pan the mind maps:

This is a very handy way to pan a large map as it's only a single mouse action.

Quick navigation with keystrokes: Keystrokes are usually the **fastest way** to do things, MindVisualizer's fully keyboard support allows you quickly perform frequently used tasks, some examples:

Jumping between nodes: Press Left/Right/Up/Down/Home/End, etc.

Pan the mind maps:

Ctrl + Left/Right/Up/Down

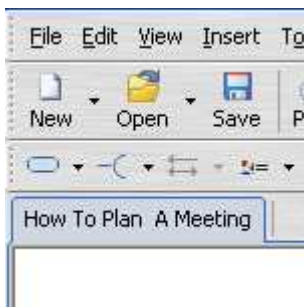
Page Up/Page Down

Zoom in/out the maps: Press Ctrl + +/-

✓ Automation Makes Your Life Easier

- **Floating Buttons:** You can Add child nodes and remove nodes **easily and quickly**, two floating buttons will appear when you move the mouse near a node.
- **Auto branch coloring:** You don't need to spend your time in formatting your maps.
- **Auto line wrapping:** Nodes with long text makes the map unreadable, MindVisualizer will wrap the text automatically once it reaches a certain length. Of course you can set your favorite max. length in the Options window.
- **Spelling check:** You can easily check all your spelling for the node text and notes, supported languages include **English, German, French, Spanish, Italian, Swedish, Dutch, Finnish, Polish, Russian and Hebrew.**

✔ State-of-the-art User Interface



While the UI is well-designed to allow you do things easily and quickly, it's fully customizable. You can **customize the windows layout** by moving the toolbars and sidebars' positions, **docking** them or make them **floating**, you can even **save the layouts** to disk with given names, this allows you use different windows layout for different working purposes; You can **customise the shortcuts**; You can **change the look and feel** styles, these styles including **Office 2007/2003**, Mac OS X, Crystal, and so on.

✔ Lightweight and High Performance

We are fans of productivity software and are keen to make high productivity software. Unlike other similar software those need you download tens of megabytes of file and rely on large and bloated platform like Java or .Net, the installer of MindVisualizer is **only around 10 MBs** which including almost **10 flash tutorial videos** and a **large image library**. Also both the startup time and running speed are very fast, some users has been advised it's the **fastest mind mapping software in the world!**

Contact Information

Website: <http://www.InnovationGear.com>

Sales Enquiry: info@innovationgear.com

Technical Support: support@innovationgear.com